



DULCE HOGAR  
BY ADHSA GROUP

# ALFOMBRA MODULAR

Productos en Stock

# CONTENIDO

COBALT

INTERMIX

SURREY

DISTRICT

COUNTRY

GRAPHITE

PREMIERE

DESIGN LINE

ROTATE

ALPHA II

AMBITIONS

CRYSTAL

ELIVENED

ESSENTIAL

COBALT CREATIONS

LARGO II

***NUEVOS***

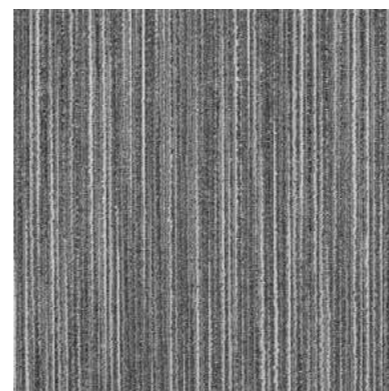
BREEZE

CRAFT

IMPRESSIONS



# COBALT



965



185



685

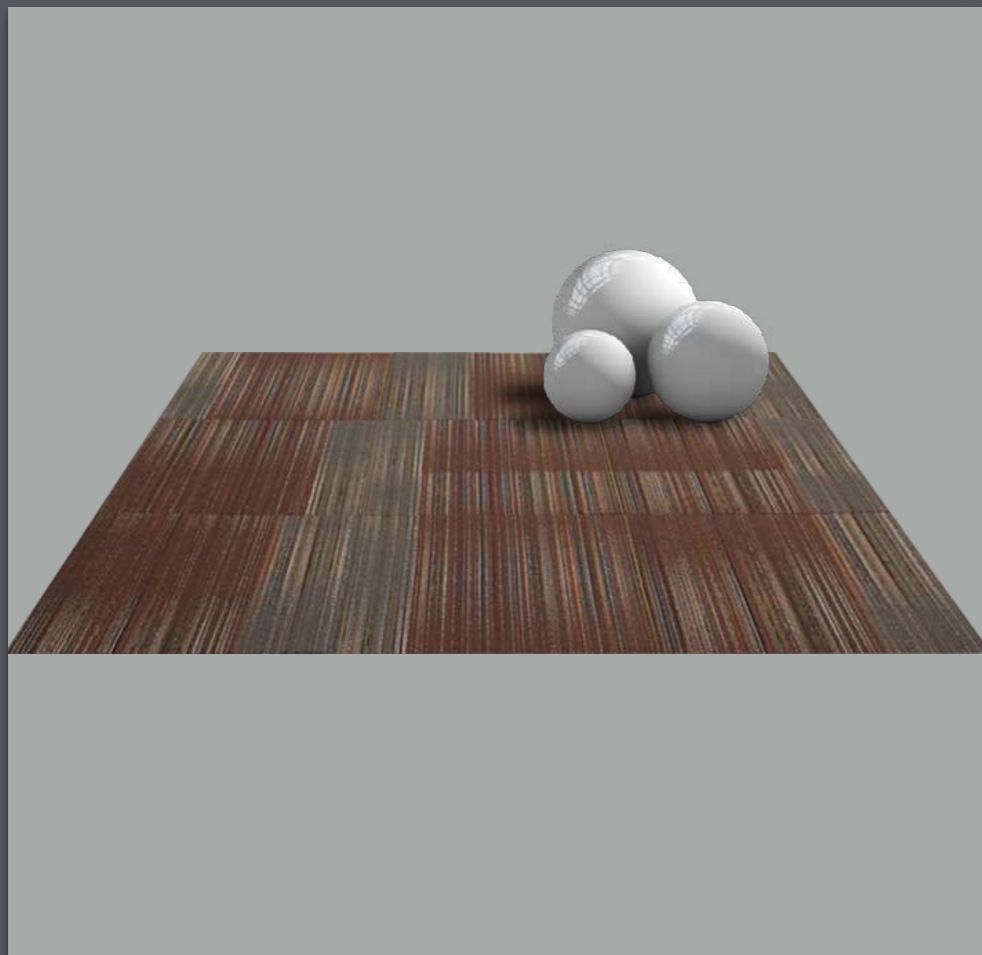


945

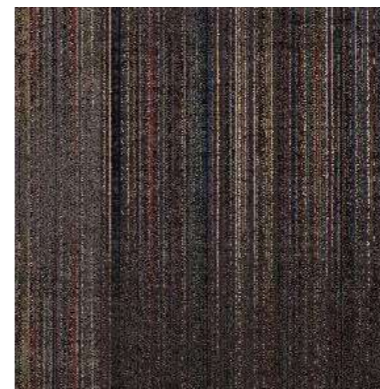
COMPOSICIÓN:  
100% PP STAINSAFE

CONTIENE POR CAJA:  
- 20 PZAS. 0.50 X 0.50 m.  
- 5 m<sup>2</sup> POR CAJA  
- 20 onzas

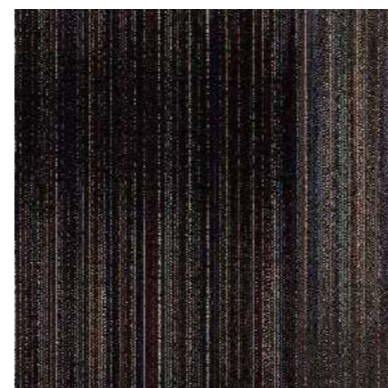
# INTERMIX



12



57



59

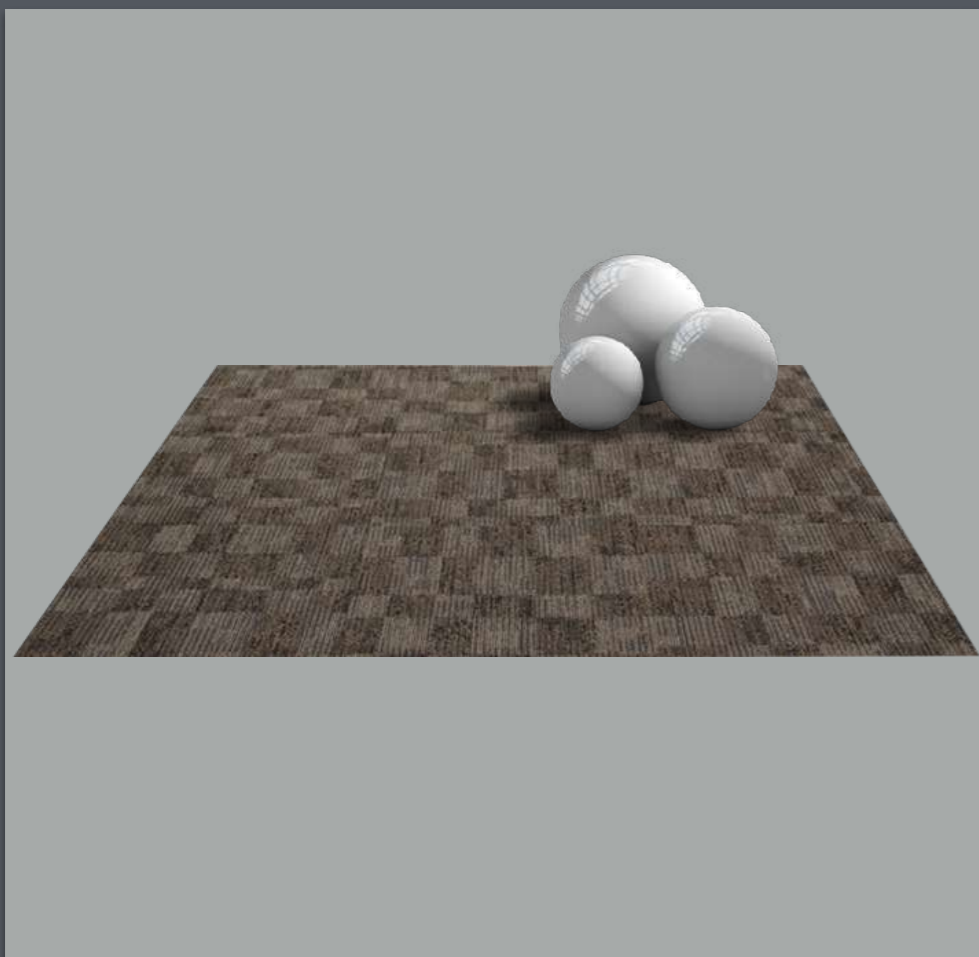


79

COMPOSICIÓN:  
100% PP STAINSAFE

CONTIENE POR CAJA:  
- 20 PZAS. 0.61 X 0.61 m.  
- 6.69 m<sup>2</sup> POR CAJA  
- 20 onzas

# SURREY



78672



78673



78674

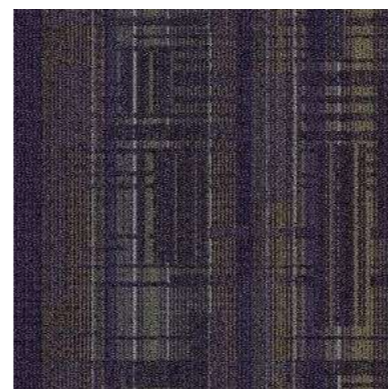
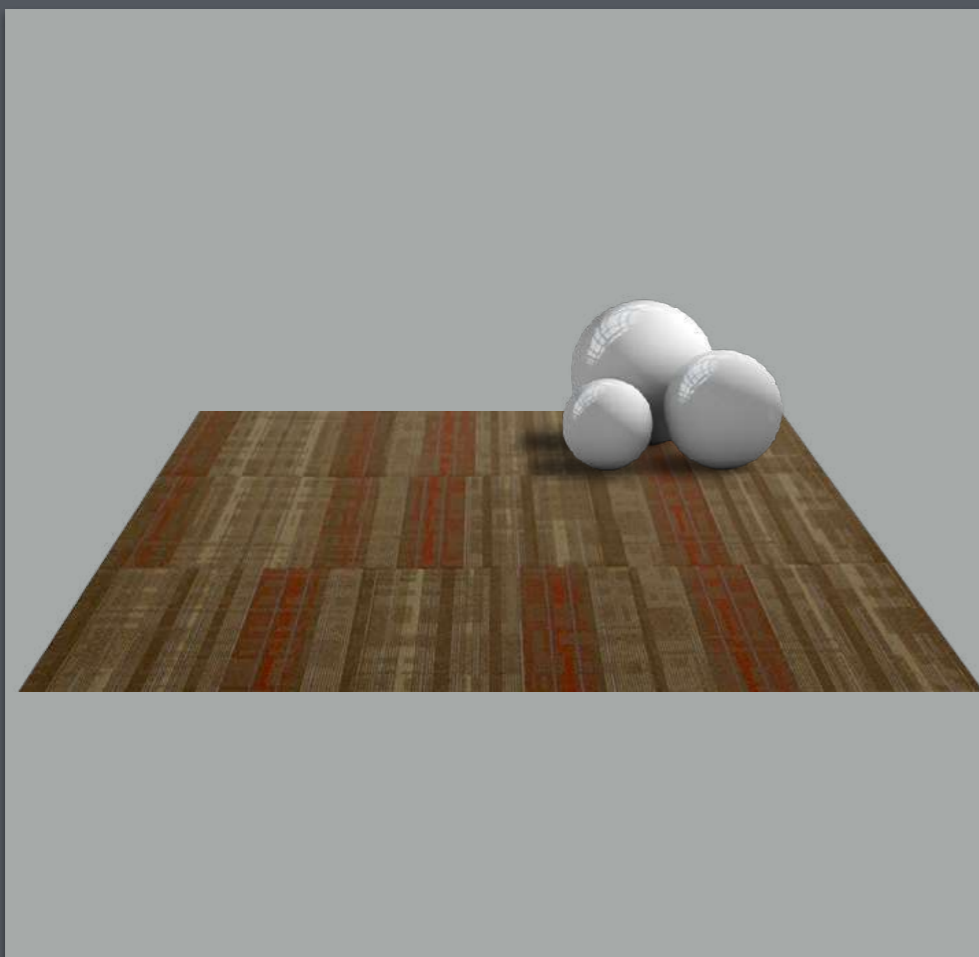


78671

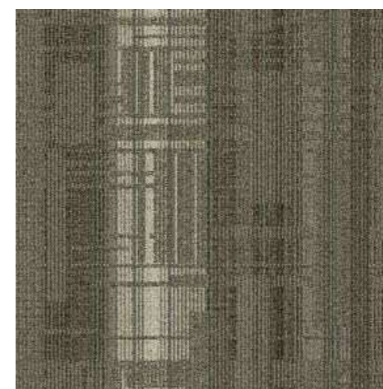
COMPOSICIÓN:  
100% PP STAINSAFE

CONTIENE POR CAJA:  
- 20 PZAS. 0.61 X 0.61 m.  
- 6.69 m<sup>2</sup> POR CAJA  
- 20 onzas

# DISTRICT



47



53



56



58



74



86

COMPOSICIÓN:  
100% NYLON

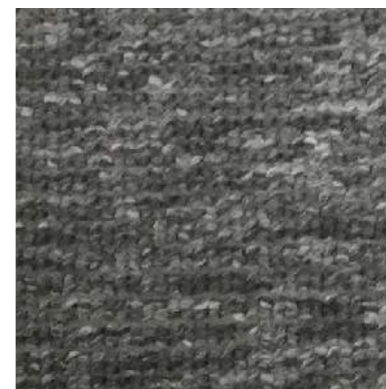
CONTIENE POR CAJA:

- 18 PZAS. 0.61 X 0.61 m.
- 6.69 m<sup>2</sup> POR CAJA
- 20 onzas

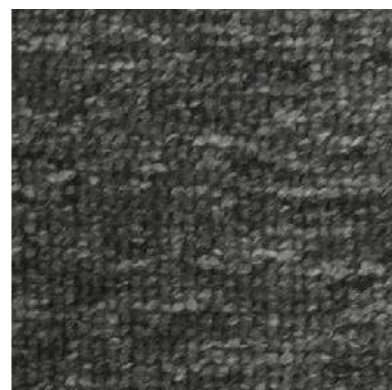
# COUNTRY



531



542



550



561

COMPOSICIÓN:  
100% NYLON

CONTIENE POR CAJA:  
- 20 PZAS. 0.50 X 0.50 m.  
- 5 m<sup>2</sup> POR CAJA  
- 18 onzas

# GRAPHITE



34



79



93



97

COMPOSICIÓN:  
100% NYLON

CONTIENE POR CAJA:  
- 20 PZAS. 0.50 X 0.50 m.  
- 5 m<sup>2</sup> POR CAJA  
- 18 onzas



# PREMIERE



BROADWAY



FILM FESTIVAL



GALA



HOLLYWOOD



MUSICAL

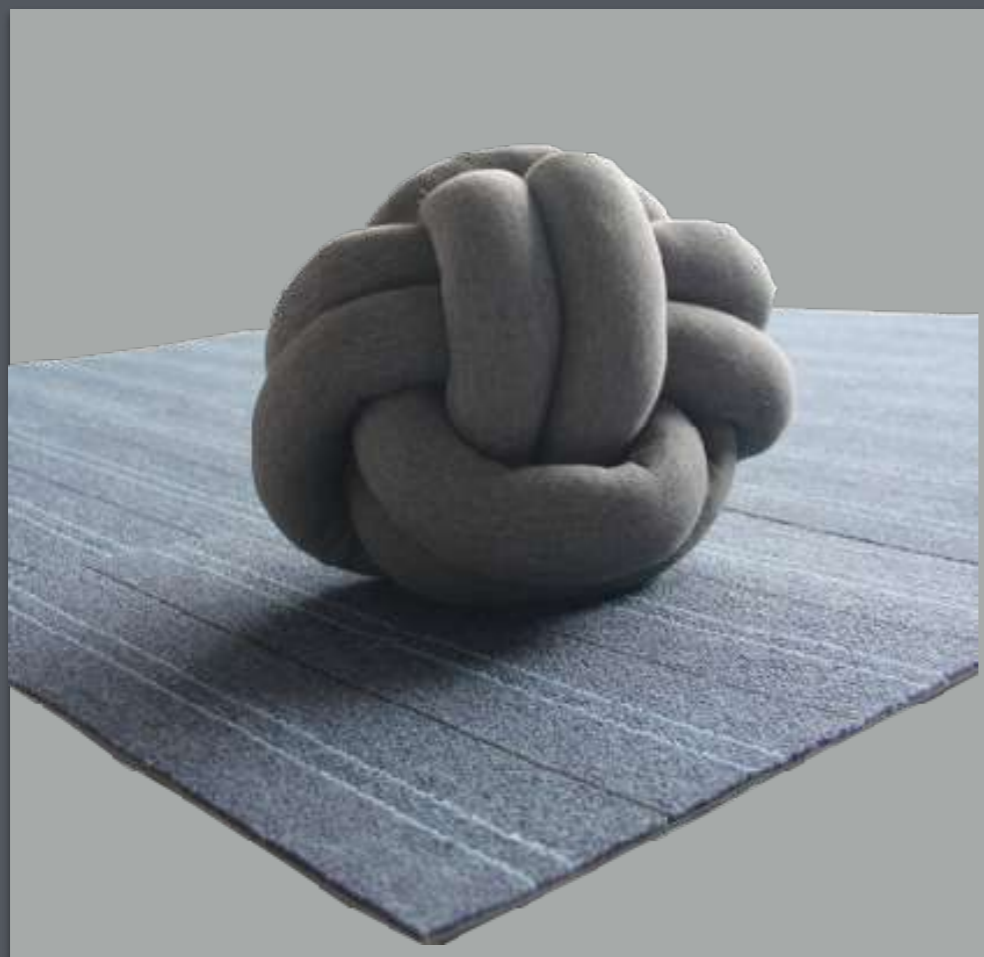


TELEVISION

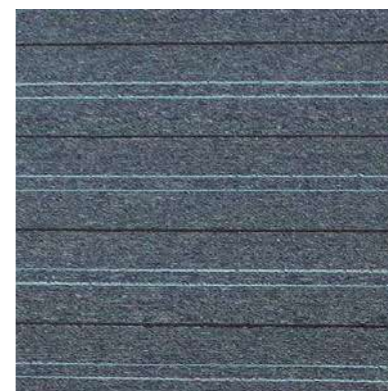
COMPOSICIÓN:  
100% NYLON

CONTIENE POR CAJA:  
- 18 PZAS. 0.61 X 0.61 m.  
- 6.69 m<sup>2</sup> POR CAJA  
- 20 onzas

# DESIGN LINE



7104



7106



7107

COMPOSICIÓN:  
100% NYLON

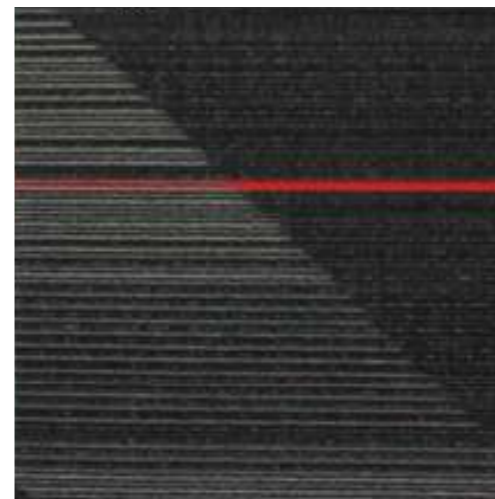
CONTIENE POR CAJA:  
- 20 PZAS. 0.50 X 0.50 m.  
- 5 m<sup>2</sup> POR CAJA  
- 18 onzas

# ROTATE



COMPOSICIÓN:  
100% NYLON

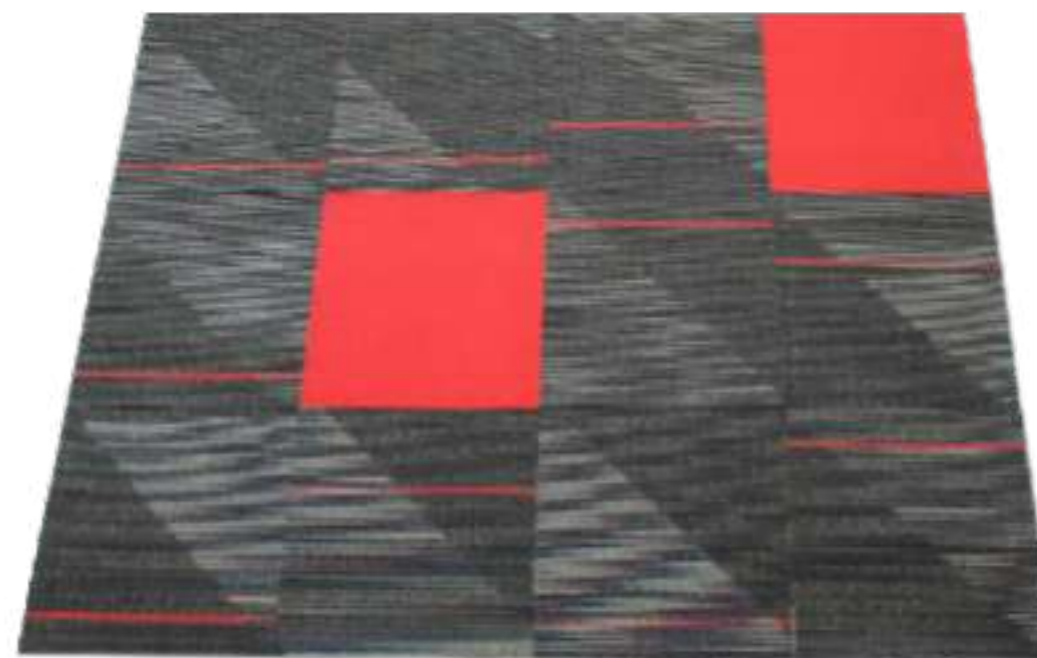
CONTIENE POR CAJA:  
- 20 PZAS. 0.50 X 0.50 m.  
- 5 m<sup>2</sup> POR CAJA  
- 18 onzas



12304



ACENTO ROJO



# ALPHA II



COMPOSICIÓN:  
100% NYLON

CONTIENE POR CAJA:

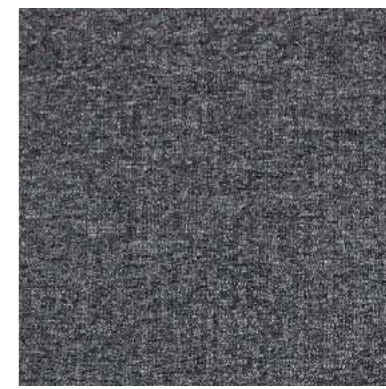
- 20 PZAS. 0.50 X 0.50 m.
- 5 m2 POR CAJA
- 18 onzas



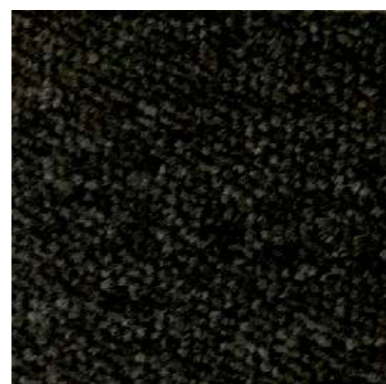
340



342



350



351



360



380



823



861

# ALPHA II



COMPOSICIÓN:  
100% NYLON

CONTIENE POR CAJA:

- 20 PZAS. 0.50 X 0.50 m.
- 5 m2 POR CAJA
- 18 onzas



830



4070



822



4031

# AMBITIONS



COMPOSICIÓN:  
100% NYLON  
DIMENSIONES  
- 0.50 X 0.50 m.  
- 0.25 X 1.0 m.



83



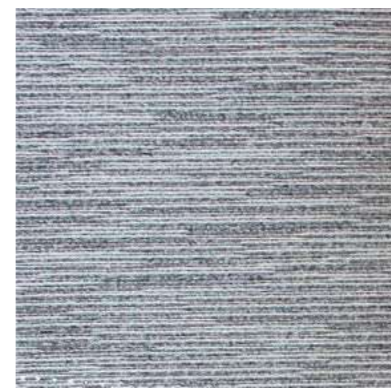
42



51



77



78



120

# AMBITIONS



## Especificaciones Ambición gráfica

Calibre de mechones 1/10 pila de bucle

composición de pila 100% PA SDN

Respaldo secundario Betún

Ancho 50x50cm

Peso de la pila 785gr/m<sup>2</sup>



Desplace la tabla horizontalmente si no está completamente visible.



# CRYSTAL



185

COMPOSICIÓN:  
100% PP STAINSAFE

- CONTIENE POR CAJA:
- 20 PZAS. 0.50 X 0.50 m.
  - 5 m2 POR CAJA
  - 18 onzas

## Mineral Collection



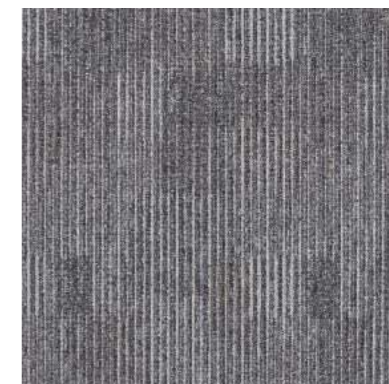
185



685



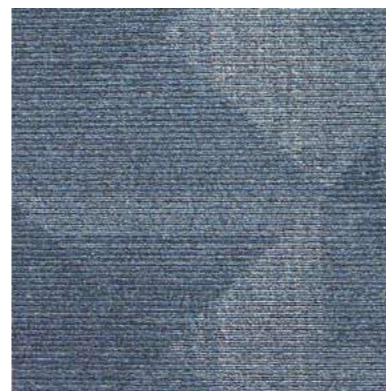
945



965



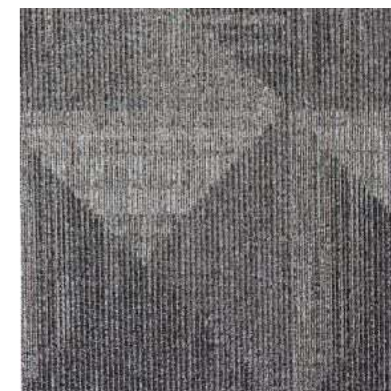
# ELIVENED



569



958



959



989

# ELIVENED



## Enlivened

Collection	Art Exposure
Style Name	Enlivened
Style Number	BT455
Product Type	Carpet Tile
Size	24" X 24"
Construction	Tufted
Installation	Quarter Turn, Vertical Ashlar, Brick Ashlar, Monolithic, Multi-Directional

Feature	Description
Overall Thickness	.196" (4.98 mm)
Backing Material	EcoFlex Matrix
Fiber Type	ColorStrand®SD Nylon
Dye Method	Solution Dyed
Installation Methods	Quarter Turn, Vertical Ashlar, Brick Ashlar, Monolithic, Multi-Directional
Stitches per Inch	12 (47.24 per 10cm)
Density	6580
Tufted Pile Weight	17.00 oz/yd <sup>2</sup> (576 g/m <sup>2</sup> )
Surface Texture	

Textured Patterned Multi-ColoredLoop

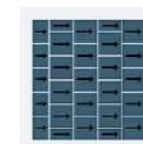
### Recommended Installation Methods



Brick Ashlar



Brick Ashlar



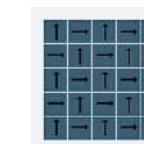
Brick Ashlar



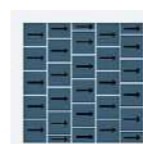
Monolithic



Multi-Directional



Quarter Turn



Vertical Ashlar

# ESSENTIAL



41



72



78

# ESSENTIAL



## Specificaties Graphic-Essential

Deling 1/10 loop pile

Poolsamenstelling 100% PA SDN

Rug Bitumen

Breedte 50 x 50 cm

Poolgewicht 650 gr/m<sup>2</sup>



Scroll de tabel horizontaal indien niet volledig zichtbaar.



### CERTIFICATEN



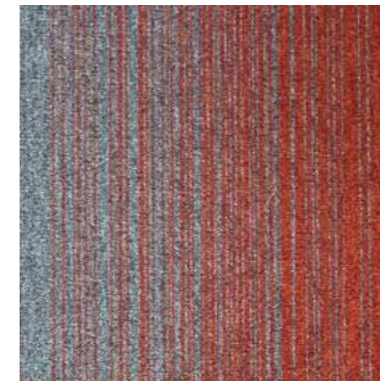
# COBALT CREATIONS



Style: structured loop pile  
Pile composition: nylon (polyamide)  
Pile height: 3.0 mm  
Classification: class 33 (intensive use)  
Pile weight: 550 g/m<sup>2</sup>  
Fire resistance: Bfl-S1



4060



4238



4250



4263



4273



4280

# COBALT CREATIONS



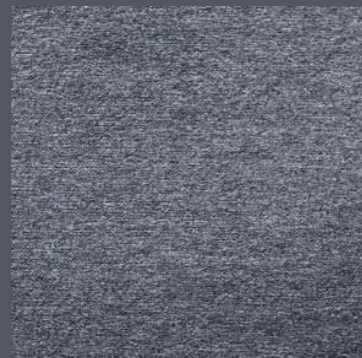
4238



4038



4250



ALPHA II -342



4260



LARGO II - 390

## OPCIONES DE INSTALACION



# COBALT CREATIONS



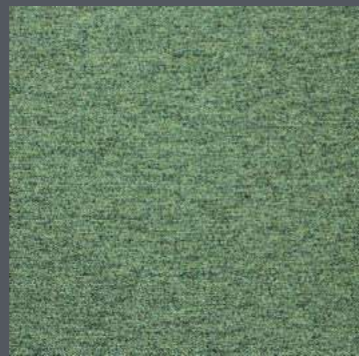
4263



4063



4273



4073

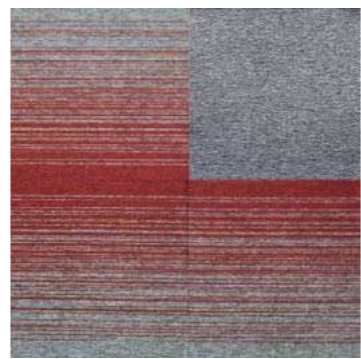


4280



ALPHA II -340

## OPCIONES DE INSTALACION



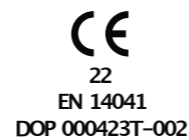
# COBALT CREATIONS



# COBALT CREATIONS

## Technical details carpet tiles

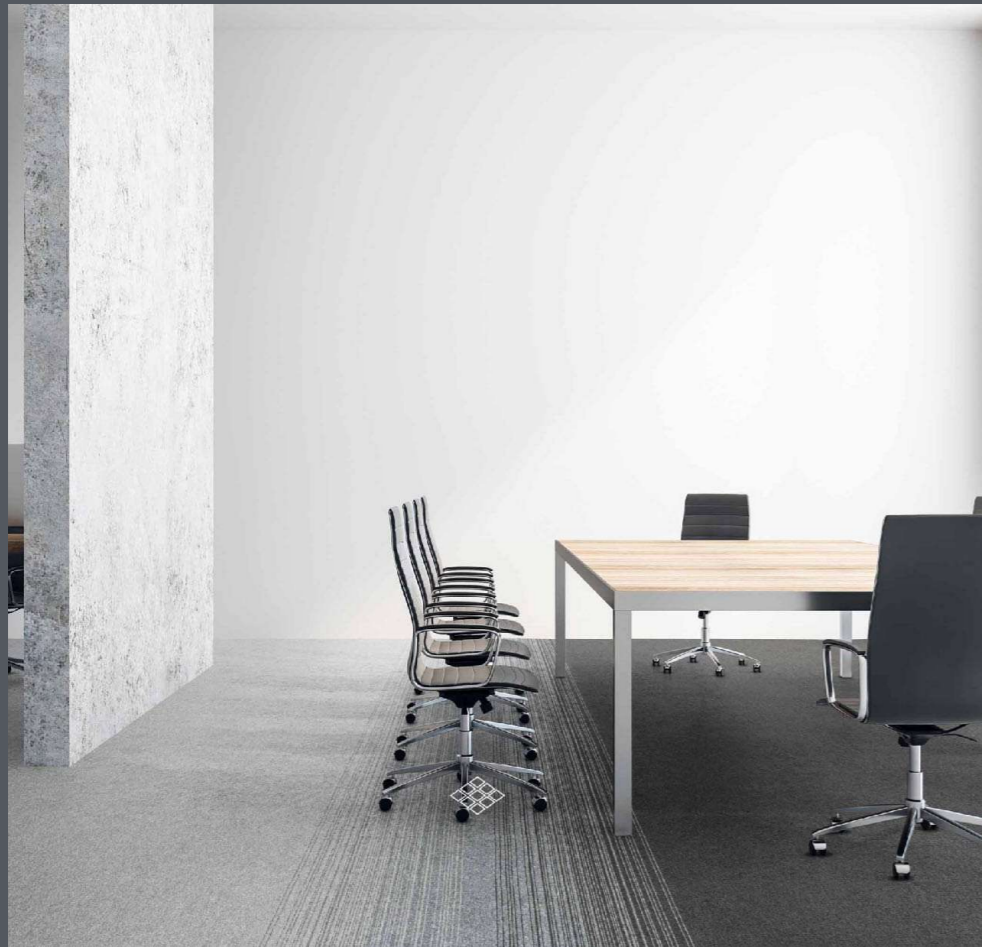
	Herstellungsart	Mode fabrication	Productie methode			tufted 1/10"	
Construction	Struktur	Structure	Structuur			loop pile	
Pile composition	Polmaterial	Couche d'usure	Poolsamenstelling			100%PA 6	
Dye method	Farbgestaltung	Coloration	Kleurverwerking			solution dyed	
Primary backing	Trägermaterial	Premier dossier	Tuftdoek			polyester fleece	
Secondary backing	Rückenausrüstung	Dossier	Rug			GREENBASE modified bitumen	
Pile weight	Poleinsatzgewicht	Poids de velour	Poolgewicht	ISO 2424	g/m <sup>2</sup>	550	(+/-)
Total weight	Gesamtgewicht	Poids total	Totaal gewicht	ISO 8543	g/m <sup>2</sup>	4300	(+/-)
Pile height	Polhöhe	Hauteur du velours	Poolhoogte	ISO 1766	mm	3,0	(+/-)
Total height	Gesamtdicke	Epaisseur totale	Totale dikte	ISO 1765	mm	6,0	(+/-)
Tuft density	Noppenzahl	Nombre de touffes	Aantal punten	ISO 1763	/m <sup>2</sup>	164000	(+/-)
Size	Abmessung	Dimension	Afmeting		cm	50 x 50	
Packing	Verpackung	Emballage	Verpakking			20 per box	5 m <sup>2</sup>
Classification	Klassifikation	Classement	Gebruiksklasse	EN 1307		33	heavy commercial
Comfort rating	Komfortklasse	Classement confort	Comfort klasse	EN 1307		LC 2	
Castor chair	Stuhlrolleneignung	Chaise à roulettes	Rolstoelgeschikt	EN 985		r =25	A(intensive)
Dimensional stability	Dimensionstabilität	Stabilité dimensionnelle	Dimensionele stabiliteit	EN 986		≤0,2%	
Fire resistance	Brennverhalten	Comportement feu	Brandgedrag	EN 13501-1		Bfl-S1	loose laid
Permanent antistatic	Permanent Antistatisch	Antistatique permanent	Permanent antistatisch	ISO 6356	kV	≤20	
Transversal resistance	Durchgangswiderstand	Résistance transversale	Doorgangsweerstand	ISO 10965	Ω	≤10 <sup>9</sup>	
Thermal resistance	Wärmedurchlaßwiderstand	Résistance thermique	Warmtedoorlaatweerstand	ISO 8302	m <sup>2</sup> /K/W	0,070	
Sound absorption	Schallabsorptionsgrad	Absorption phonique	Geluidsabsorptie	ISO 354	α <sub>w</sub>	0,15	
Impact sound reduction	Trittschallverbesserungsmaß	Isolation phonique	Geluidsisolatie	ISO 10140	ΔL <sub>w</sub>	24 dB	
				ISO 10140	ΔL	39 dB	(1000 Hz)
Light fastness	Lichtechtheit	Solidité à la lumière	Lichtechtheid	ISO 105B02		8	
Rubbing fastness	Reibechtheit	Solidité au frottement	Wrijftechtheid	ISO 105X12		4-5	wet/dry
Water fastness	Wasserechtheit	Solidité à l'eau	Waterrechtheid	ISO 105E01		5	colour/staining



EN 1307  
for use as floorcovering  
in buildings (EN 14041)  
according to the  
manufacturer's specification



# LARGO II



COMPOSICIÓN:  
100% OLEFIN

CONTIENE POR CAJA:  
- 20 PZAS. 0.50 X 0.50 m.  
- 5 m<sup>2</sup> POR CAJA  
- 20 onzas



46



82



91



155



194



320



390



827



966

# LARGO II



553



942



900

COMPOSICIÓN:  
100% OLEFIN

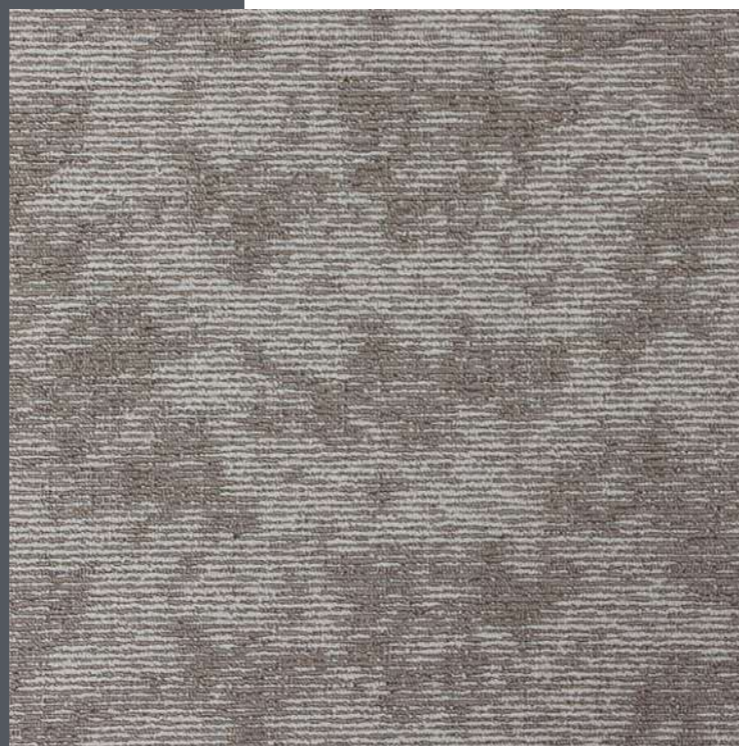
CONTIENE POR CAJA:

- 20 PZAS. 0.50 X 0.50 m.
- 5 m<sup>2</sup> POR CAJA
- 20 onzas

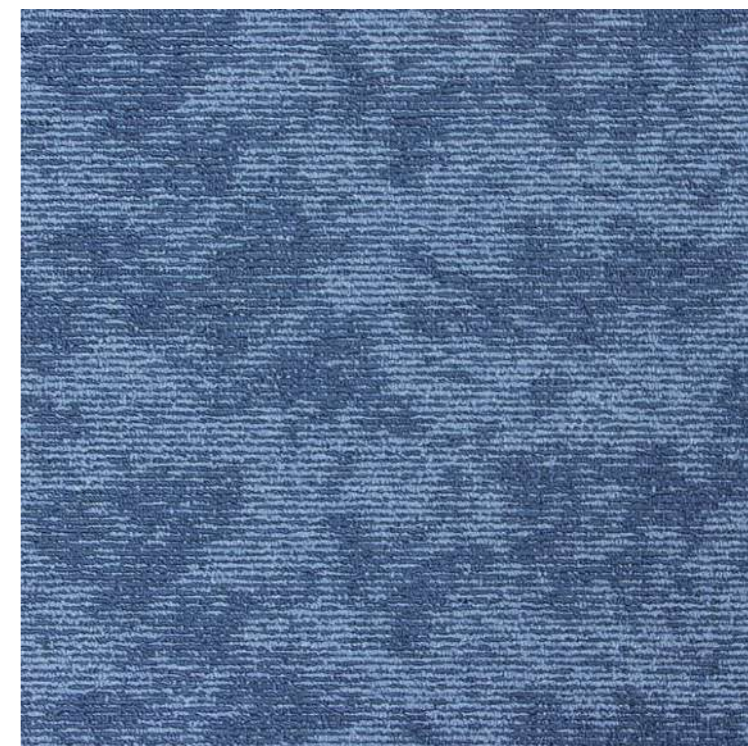
# BREEZE



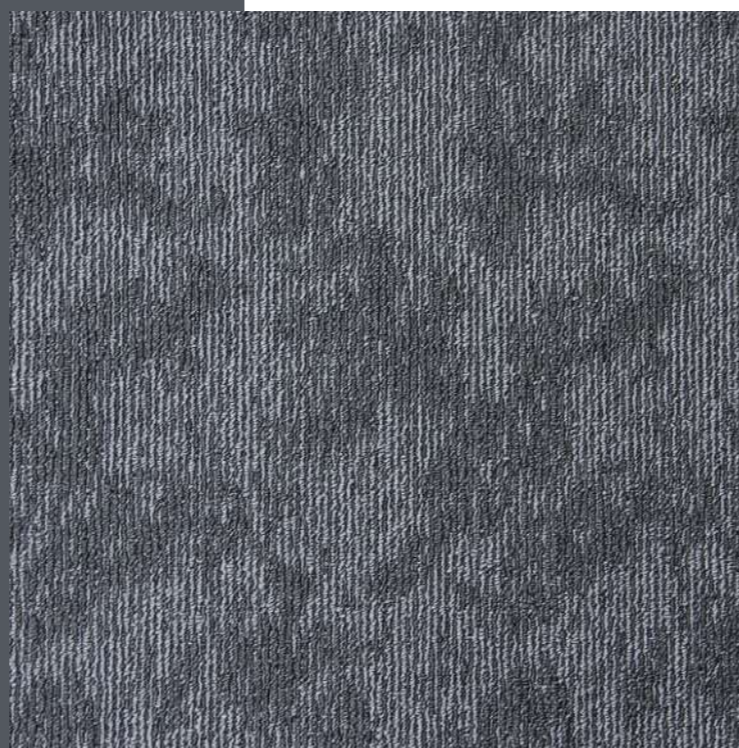
100 % P.P  
CAJA 20 PZAS.  
50 X 50 cm.



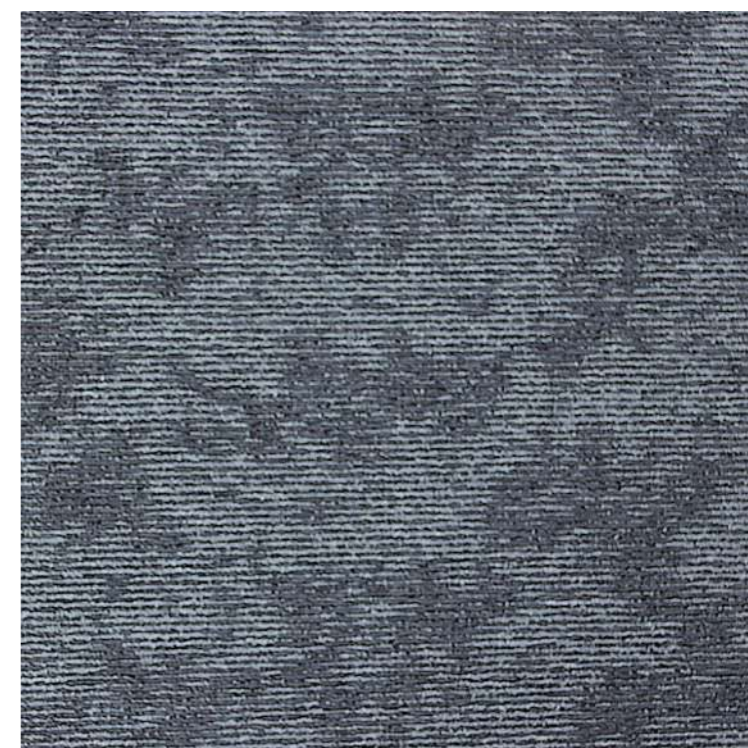
BREEZE 39



BREEZE 77



BREEZE 93



BREEZE 97

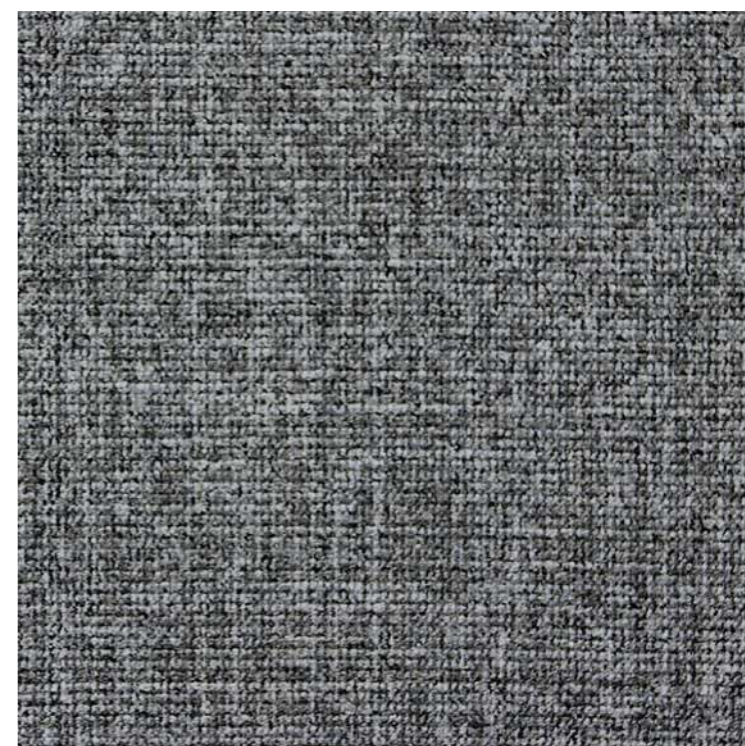
# CRAFT



60% PA 40% PP  
CAJA 20 PZAS  
50 X 50 cm.



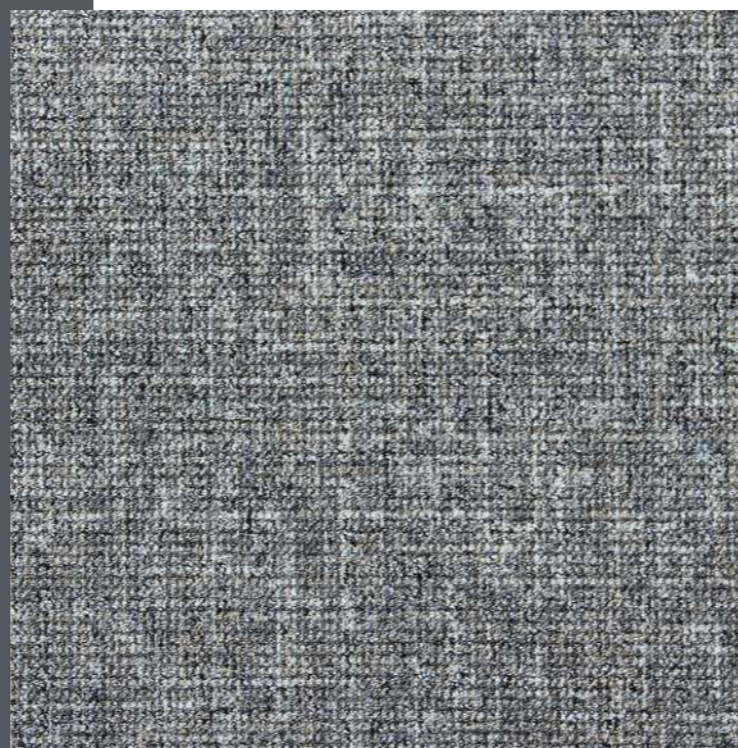
CRAFT 77



CRAFT 90



CRAFT 53

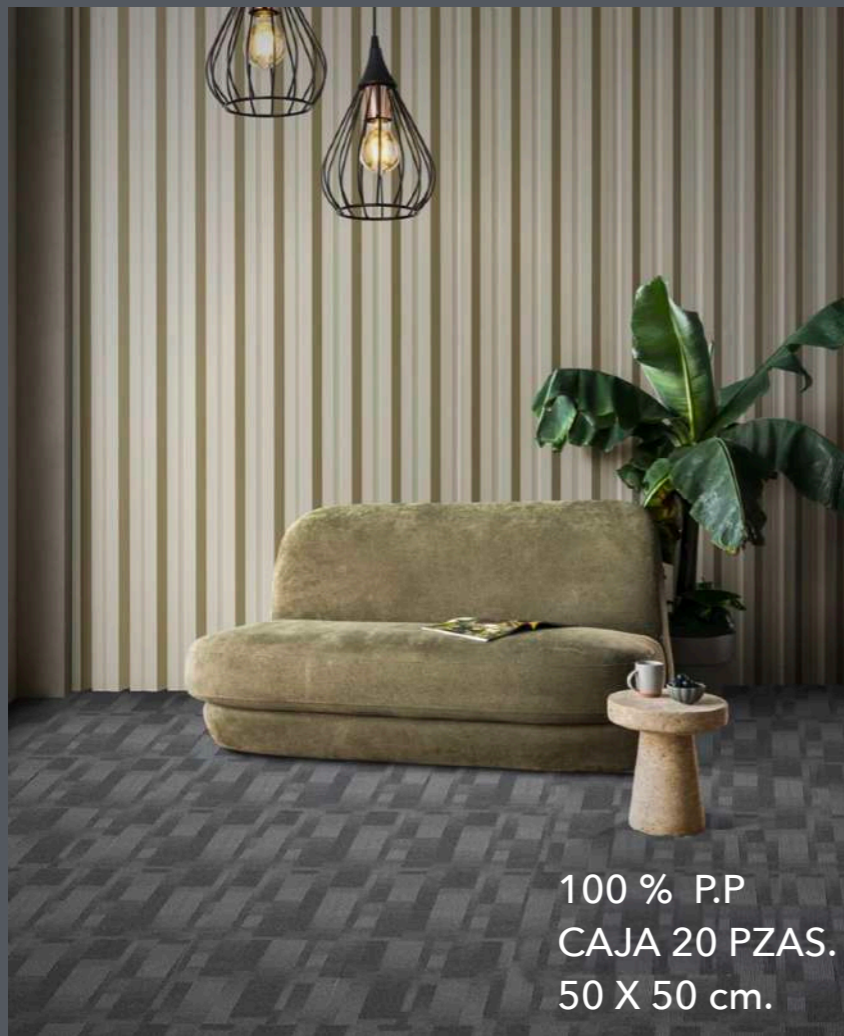


CRAFT 93

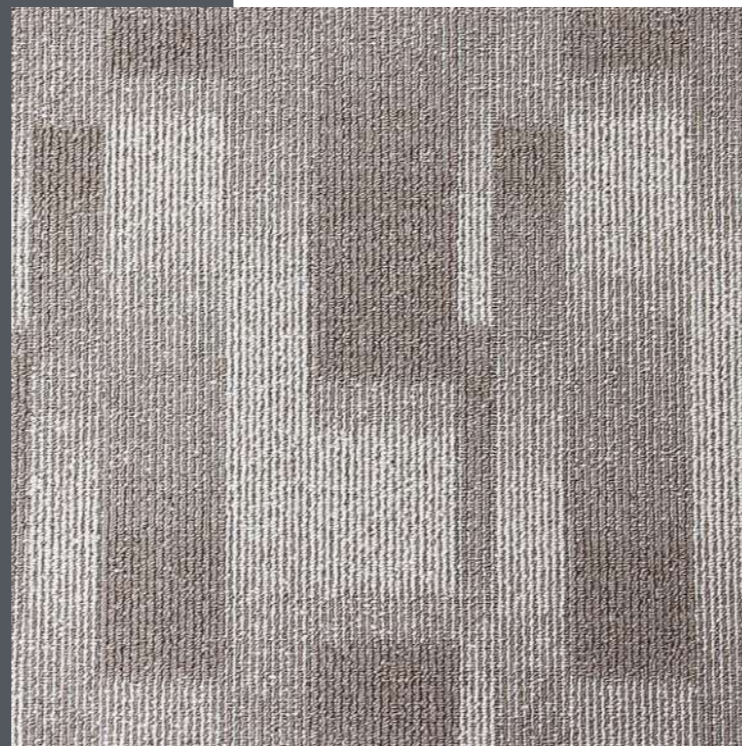


CRAFT 98

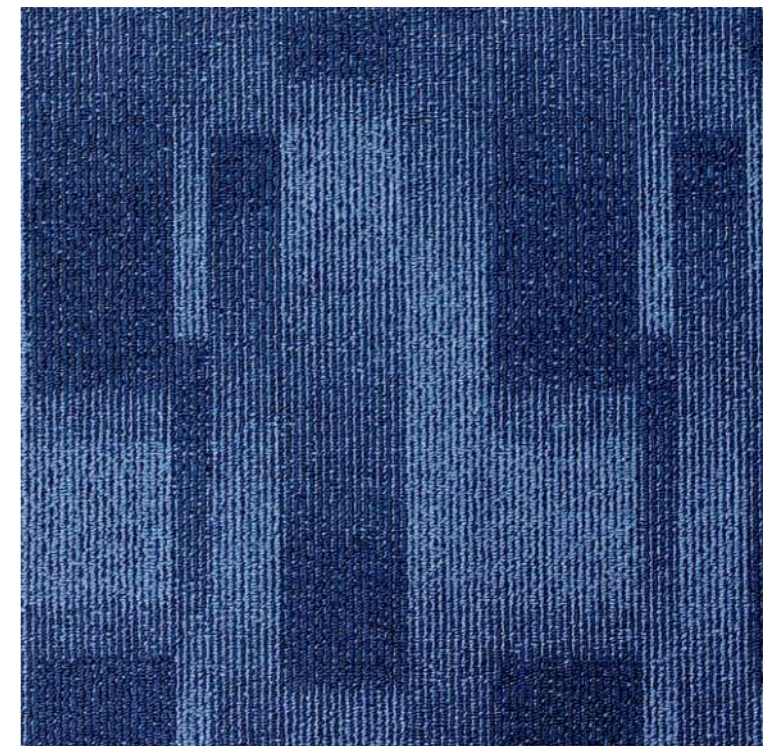
# IMPRESSIONS



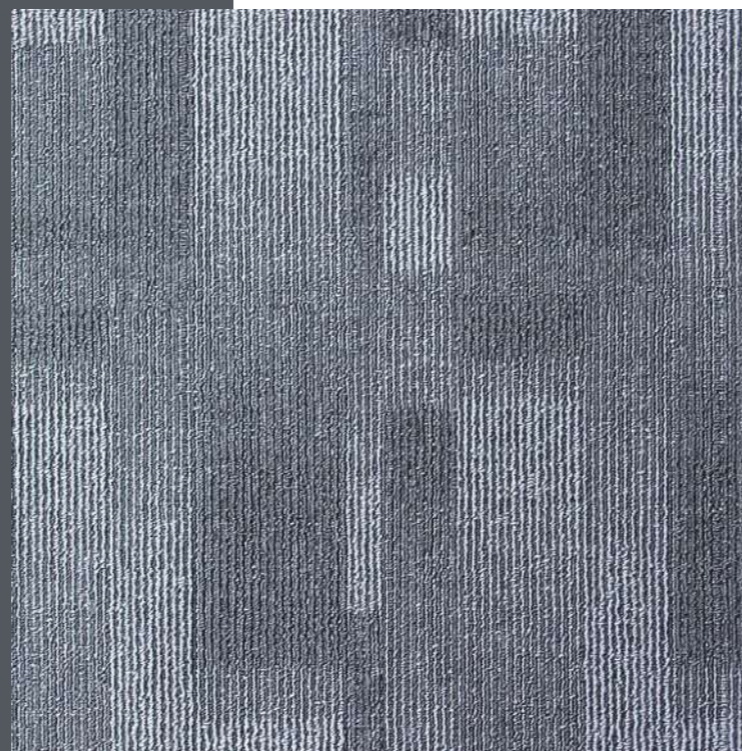
100 % P.P  
CAJA 20 PZAS.  
50 X 50 cm.



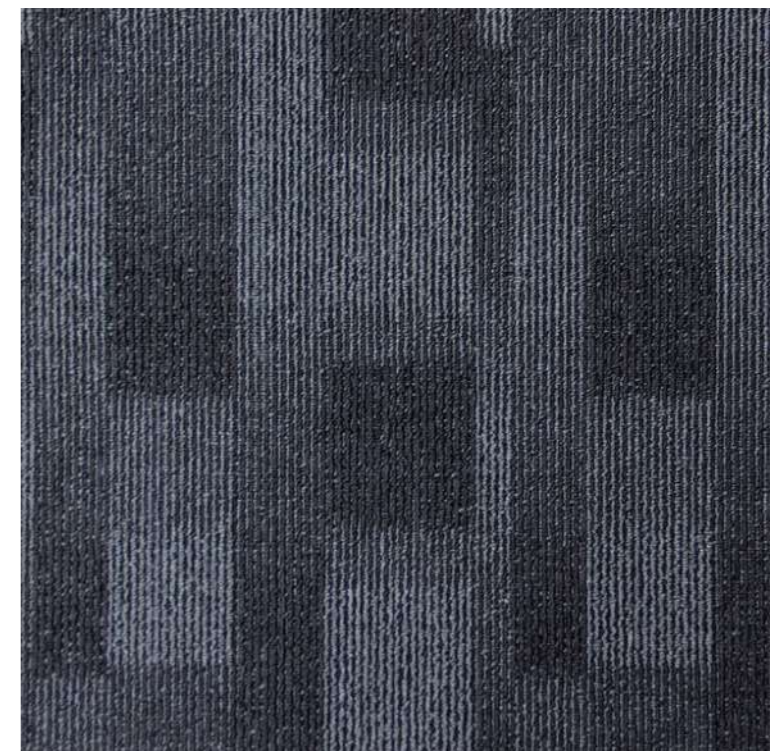
IMPRESSIONS 34



IMPRESSIONS 77



IMPRESSIONS 93



IMPRESSIONS 97

